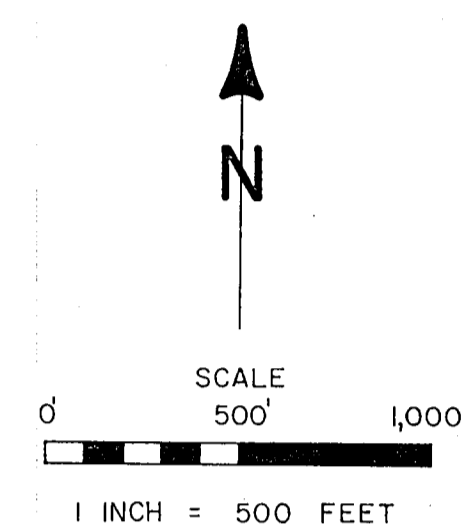
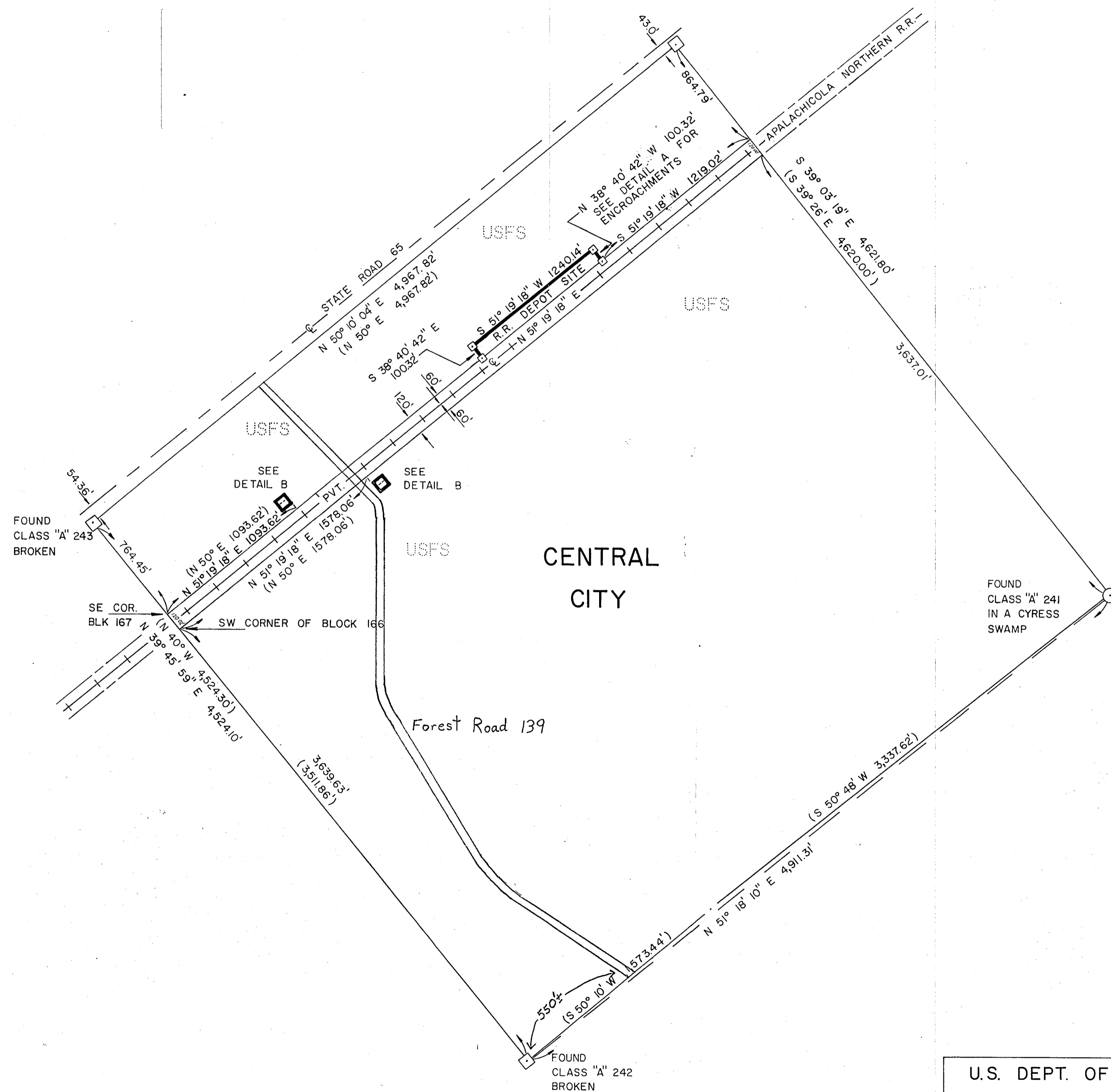


U.S. FOREST SERVICE SURVEY
CENTRAL CITY
 SECTIONS 24, 26, 27, 34 AND 35 T.3S., R.7W., LIBERTY CO. FLORIDA



LEGEND

- FOUND CLASS "A" MONUMENT. 3" DIA. CONCRETE MON. WITH BRASS CAP
- SET 4" x 4" x 30" CONCRETE MON. WITH ALUMINUM CAP
- PROPERTY LINE POSTED THIS SURVEY
- RECORD BEARING AND DISTANCE

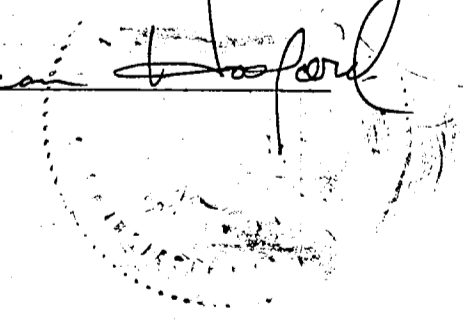
NOTES

- 1) THIS SURVEY WAS EXECUTED WITH A WILD T-16 THEODOLITE AND A HEWLETT-PACKARD 3805 ELECTRONIC DISTANCE METER.
- 2) THE BEARINGS ARE BASED ON A SOLAR OBSERVATION.
- 3) THE NORTH CORNER OF CENTRAL CITY WAS RE-ESTABLISHED AT THE RECORD DISTANCES FROM CLASS "A" CORNER 243 AND THE CENTERLINE OF S.R. 65 (FORMERLY S.R. 135).
- 4) ENCROACHMENTS ARE SHOWN IN DETAILS "A" AND "B" ON SHEET 2.

Approved by Liberty County Commissioners

Donnie G. Harpe
 Donnie G. Harpe, Chairman

Attest by *[Signature]*



SHEET 1 OF 2

U.S. DEPT. OF AGRICULTURE FOREST SERVICE NATIONAL FORESTS IN FLORIDA APALACHICOLA N.F. - APALACHICOLA R.D.	SURVEYED BY: DAVID COLEMAN	DATE: 4/81
	PLAT BY: B.A. ANDERSON	DATE: 7/81
	CHECKED BY: W.G. DEMPSEY	DATE: 7/81
	FIELD BOOK: 133	
	PLAT NUMBER 3-115	