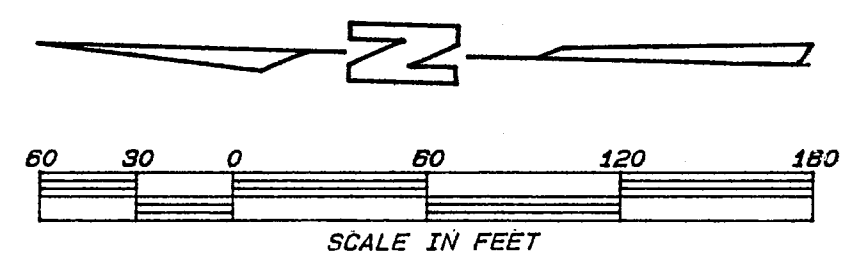


SHULER HEIGHTS UNIT NO. 3

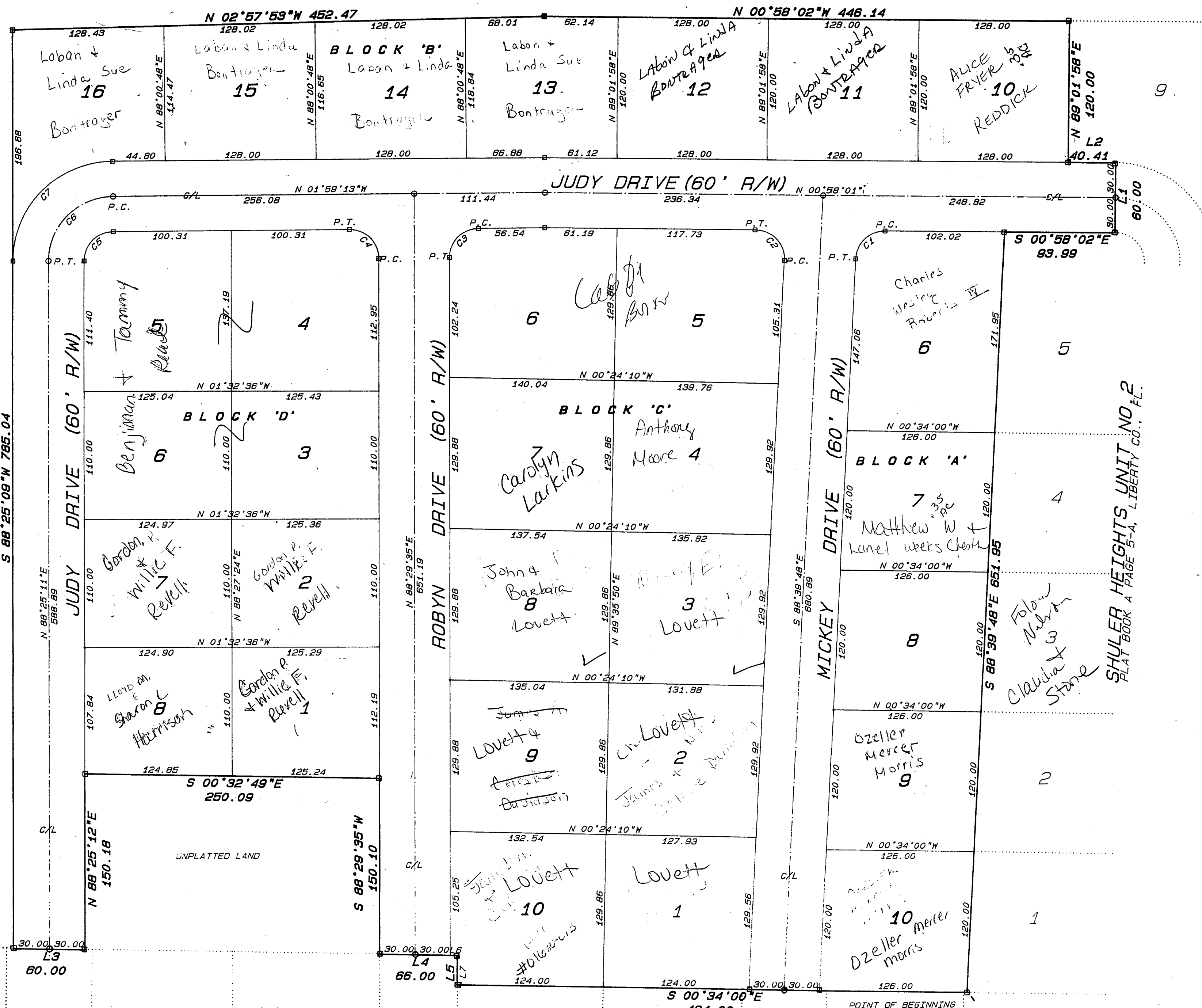
LYING IN A PORTION OF SECTION 6, T15, R7E, BRISTOL, LIBERTY COUNTY, FLORIDA



UNPLATTED LAND

CURVE	DELTA	RADIUS	ARC	TANGENT	CHORD	CHORD BRG
1	87°41'45"	25.00	38.26	24.01	34.64	S 44°48'55"E
2	92°18'14"	25.00	40.28	26.03	36.08	N 45°11'05"E
3	89°31'12"	25.00	39.06	24.79	35.21	S 46°44'53"E
4	90°28'48"	25.00	39.48	25.21	35.50	N 43°15'10"E
5	88°35'33"	25.00	39.09	24.82	35.23	N 46°47'01"W
6	88°35'33"	55.00	86.00	54.61	77.50	N 46°47'00"W
7	88°35'33"	85.00	132.91	84.40	119.78	N 46°47'00"W

7



LEGEND

- CONCRETE MONUMENT # 0340 (SET)
- IRON ROD/CAP # 0340 (SET)
- CENTERLINE OF ROADWAY
- CONCRETE MONUMENT (UNNUMBERED-FOUND)
- POINT OF TANGENCY
- POINT OF CURVATURE

GENERAL NOTES

- THE BOUNDARY SURVEY AS SHOWN HEREON IS BASED ON EXISTING FIELD MONUMENTATION.
- THE BEARINGS AND NORTH ARROW AS SHOWN ARE REFERENCED TO A VALUE OF S 00°34'00"E ALONG THE EASTERLY LINE OF SHULER HEIGHTS UNIT NO. 1, PLAT BOOK 'A' PAGE 16, LIBERTY COUNTY, FLORIDA.
- THERE MAY BE ADDITIONAL RESTRICTIONS THAT ARE NOT RECORDED ON THIS PLAT THAT MAY BE FOUND IN THE PUBLIC RECORDS OF LIBERTY COUNTY, FLORIDA.

DEDICATION

STATE OF FLORIDA, COUNTY OF LIBERTY

KNOW ALL MEN BY THESE PRESENT THAT CAROLYN SHULER LARKINS AND FREDERICK MYERS SHULER, OWNERS IN FEE SIMPLE OF THE LAND SHOWN HEREON PLATTED AS SHULER HEIGHTS UNIT NO. 3, BEING MORE PARTICULARLY DESCRIBED AS FOLLOWS:

BEGIN AT A CONCRETE MONUMENT MARKING THE SOUTHEAST CORNER OF LOT 1 BLOCK 'A', SHULER HEIGHTS UNIT NO. 2, AS RECORDED IN PLAT BOOK A, AT PAGE 5-A, OF THE PUBLIC RECORDS OF LIBERTY COUNTY, FL.;

THENCE RUN SOUTH 88 DEGREES 39 MINUTES 48 SECONDS EAST A DISTANCE OF 651.95 FEET TO A CONCRETE MONUMENT; THENCE RUN SOUTH 00 DEGREES 58 MINUTES 02 SECONDS EAST A DISTANCE OF 93.99 FEET TO A CONCRETE MONUMENT; THENCE RUN NORTH 89 DEGREES 01 MINUTES 58 SECONDS EAST A DISTANCE OF 60.00 FEET TO A CONCRETE MONUMENT; THENCE RUN NORTH 00 DEGREES 58 MINUTES 02 SECONDS EAST A DISTANCE OF 40.41 FEET TO A CONCRETE MONUMENT; THENCE RUN NORTH 89 DEGREES 01 MINUTES 58 SECONDS EAST A DISTANCE OF 120.00 FEET TO A CONCRETE MONUMENT; THENCE RUN SOUTH 00 DEGREES 58 MINUTES 02 SECONDS WEST A DISTANCE OF 446.14 FEET TO A CONCRETE MONUMENT; THENCE RUN NORTH 02 DEGREES 57 MINUTES 53 SECONDS WEST A DISTANCE OF 452.47 FEET TO A CONCRETE MONUMENT; THENCE RUN SOUTH 88 DEGREES 25 MINUTES 09 SECONDS WEST A DISTANCE OF 785.04 FEET TO A CONCRETE MONUMENT BEING LOCATED ON THE EASTERLY LINE OF THE AFORESAID SHULER HEIGHTS UNIT NO. 1; THENCE RUN SOUTH 00 DEGREES 34 MINUTES 00 SECONDS EAST ALONG THE AFORESAID EASTERLY LINE OF SHULER HEIGHTS UNIT NO. 1 A DISTANCE OF 60.00 FEET TO A CONCRETE MONUMENT; THENCE RUN NORTH 88 DEGREES 25 MINUTES 12 SECONDS EAST A DISTANCE OF 150.18 FEET TO A CONCRETE MONUMENT; THENCE RUN SOUTH 00 DEGREES 32 MINUTES 49 SECONDS EAST A DISTANCE OF 250.09 FEET TO A CONCRETE MONUMENT; THENCE RUN SOUTH 88 DEGREES 29 MINUTES 35 SECONDS WEST A DISTANCE OF 150.10 FEET TO A CONCRETE MONUMENT BEING LOCATED ON THE AFORESAID EASTERLY LINE OF SHULER HEIGHTS UNIT NO. 1; THENCE RUN SOUTH 00 DEGREES 34 MINUTES 00 SECONDS EAST ALONG THE AFORESAID EASTERLY LINE OF SHULER HEIGHTS UNIT NO. 1 A DISTANCE OF 66.00 FEET TO A CONCRETE MONUMENT; THENCE RUN SOUTH 88 DEGREES 26 MINUTES 00 SECONDS WEST ALONG THE AFORESAID EASTERLY LINE OF SHULER HEIGHTS UNIT NO. 1 A DISTANCE OF 25.00 FEET TO A CONCRETE MONUMENT; THENCE RUN SOUTH 00 DEGREES 34 MINUTES 00 SECONDS EAST ALONG THE AFORESAID EASTERLY LINE OF SHULER HEIGHTS UNIT NO. 1 A DISTANCE OF 134.00 FEET TO THE POINT OF BEGINNING

THE ABOVE DESCRIBED PARCEL OF LAND IS SITUATED IN A PORTION OF SECTION 6, TOWNSHIP 1 SOUTH, RANGE 7 WEST, LIBERTY COUNTY, FLORIDA AND CONTAINS 14.91 ACRES

HAVE LAID SAID LANDS TO BE DIVIDED AND SUBDIVIDED AS SHOWN HEREON AND DOES HEREBY DEDICATE TO THE PERPETUAL USE OF THE CITY OF BRISTOL, FLORIDA, ALL STREETS, ROADS, ALLEYS, AND OTHER RIGHTS-OF-WAY, AND ALL PARKS, RECREATION AREAS, AND ALL EASEMENTS FOR UTILITIES, DRAINAGE AND OTHER PURPOSES, AND FOR ALL PURPOSES INCIDENT THERETO AS SHOWN AND DEPICTED HEREON, RESERVING HOWEVER THE REVERSION OR REVERSIONS SHOULD THE SAME BE RENOUNCED, DISCLAIMED, ABANDONED, OR THE USE THEREOF BE DISCONTINUED AS PRESCRIBED BY LAW BY APPROPRIATE OFFICIAL ACTION OF THE PROPER HAVING CHARGE OR JURISDICTION THEREOF THIS DAY OF A.D. 1990

Carolyn Shuler Larkins FCD
 CAROLYN SHULER LARKINS WITNESS
Frederick Myers Shuler
 FREDERICK MYERS SHULER WITNESS

ACKNOWLEDGEMENT

STATE OF FLORIDA, COUNTY OF LIBERTY

BEFORE ME THIS DAY PERSONALLY APPEARED CAROLYN SHULER LARKINS AND FREDERICK MYERS SHULER, AND ACKNOWLEDGED THAT THEY EXECUTED THE FOREGOING DEDICATION FREELY AND VOLUNTARILY FOR THE USES AND PURPOSES THEREIN STATED.

WITNESS MY HAND AND SEAL AT BRISTOL, FLORIDA THIS 19 DAY OF October A.D., 1990

NOTARY *[Signature]*
 MY COMMISSION EXPIRES 1993

CITY COUNCIL

APPROVED BY THE COUNCIL OF THE CITY OF BRISTOL, LIBERTY COUNTY, FLORIDA,

THIS 18th DAY OF October A.D., 1990

[Signature]
 CHAIRMAN

LINE	BEARING	DISTANCE
1	N 89°01'58"E	60.00
2	N 00°58'02"W	40.41
3	S 00°34'00"E	60.00
4	S 00°34'00"E	66.00
5	S 88°26'00"W	25.00
6	S 00°34'00"E	6.00
7	S 88°26'00"W	25.00

CLERK OF THE CIRCUIT COURT

ACCEPTED FOR FILES AND RECORDED THIS 22 DAY OF October A.D., 1990.

IN PLAT BOOK A AT PAGE 5B
[Signature]
 CLERK OF THE CIRCUIT COURT LIBERTY CO., FL.

SURVEYOR'S CERTIFICATE

I HEREBY CERTIFY THAT THIS SURVEY WAS MADE UNDER MY RESPONSIBLE DIRECTION AND SUPERVISION, AND IS A CORRECT REPRESENTATION OF THE LAND SURVEYED, THAT THE PERMANENT MONUMENTS AND PERMANENT CONTROL POINTS HAVE BEEN SET AND THAT THE SURVEY DATA AND MONUMENTATION COMPLIES WITH CHAPTER 177 OF THE FLORIDA STATUTES AND WITH CHAPTER 21HH-6 FLORIDA ADMINISTRATIVE CODE

[Signature]
 ROY A. PRIM, REGISTERED FLORIDA LAND SURVEYOR # 4117 CORPORATE # LB-0340
 BASKERVILLE - DONOVAN, INC.
 2852 Remington Green Circle
 TALLAHASSEE, FLA. (904) 385-6788