

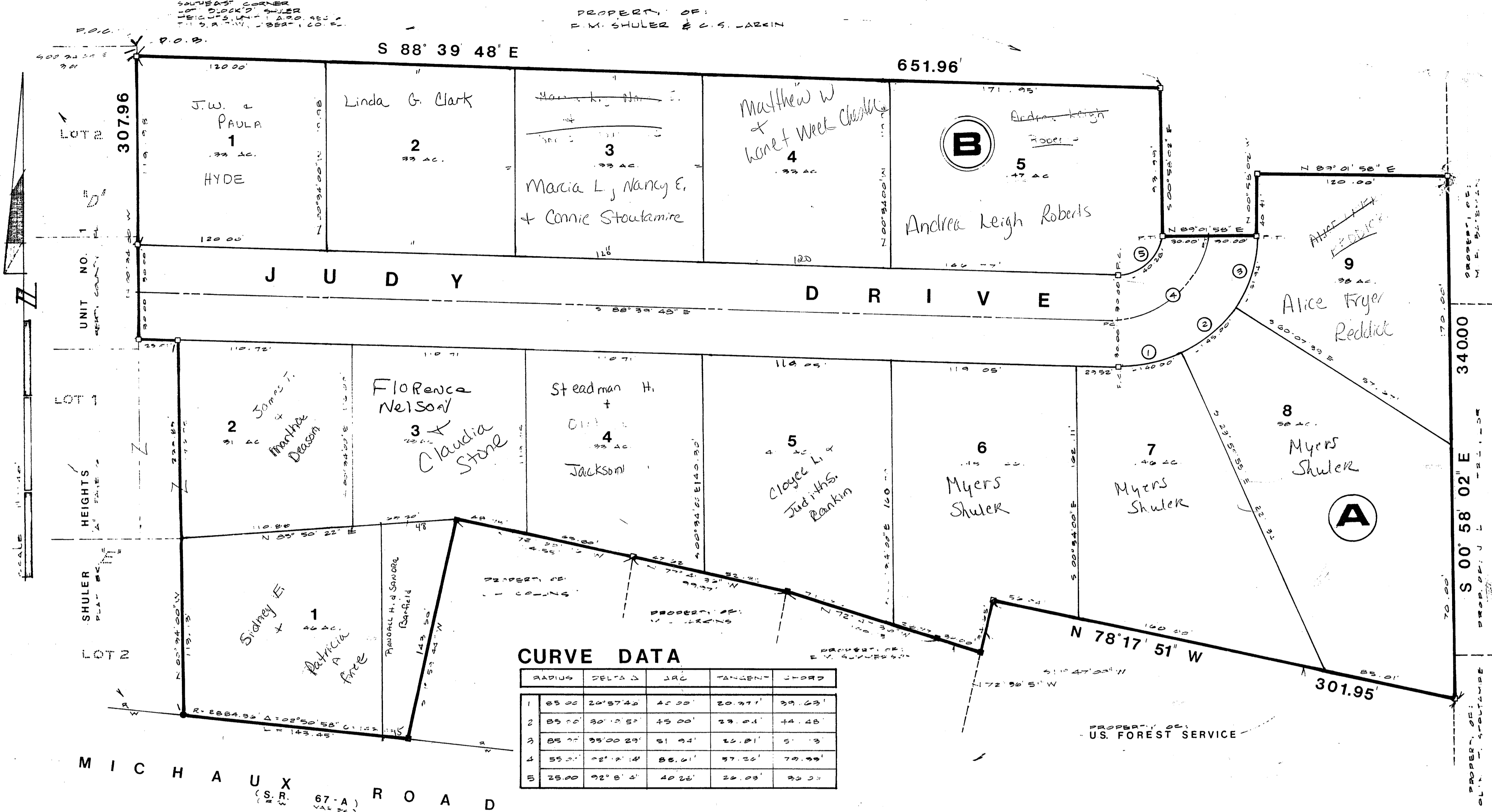
SHULER HEIGHTS UNIT

NO. 2

LYING IN A PORTION OF SECTION 6, TOWNSHIP - 1 - SOUTH, RANGE - 7 - WEST

LIBERTY COUNTY, FLA.

6



DEDICATION
STATE OF FLORIDA
COUNTY OF LIBERTY

Know all men by these presents that Carolyn Shuler Larkin and Frederick Myers Shuler owners in fee simple of the land shown hereon platted as SHULER HEIGHTS UNIT NO. 2, being more particularly described as follows:

COMMENCE AT A CONCRETE MONUMENT MARKING THE SOUTHEAST CORNER OF LOT 1, BLOCK "D", SHULER HEIGHTS, UNIT NO. 1, AS RECORDED IN PLAT BOOK A, AT PAGE 16 OF THE PUBLIC RECORDS OF LIBERTY COUNTY, FLORIDA; THENCE RUN SOUTH 00 DEGREES 34 MINUTES 00 SECONDS EAST A DISTANCE OF 3.00 FEET; THENCE RUN SOUTH 88 DEGREES 39 MINUTES 48 SECONDS EAST A DISTANCE OF 651.96 FEET; THENCE RUN SOUTH 00 DEGREES 30 MINUTES 02 SECONDS EAST A DISTANCE OF 43.99 FEET; THENCE RUN NORTH 89 DEGREES 01 MINUTES 58 SECONDS EAST A DISTANCE OF 60.00 FEET; THENCE RUN NORTH 00 DEGREES 58 MINUTES 02 SECONDS WEST A DISTANCE OF 40.41 FEET; THENCE RUN NORTH 89 DEGREES 01 MINUTES 58 SECONDS EAST A DISTANCE OF 120.00 FEET; THENCE RUN SOUTH 00 DEGREES 58 MINUTES 02 SECONDS EAST A DISTANCE OF 140.00 FEET TO A CONCRETE MONUMENT; THENCE RUN NORTH 78 DEGREES 17 MINUTES 51 SECONDS WEST A DISTANCE OF 301.95 FEET; THENCE RUN SOUTH 11 DEGREES 47 MINUTES 09 SECONDS WEST A DISTANCE OF 34.65 FEET; THENCE RUN NORTH 72 DEGREES 36 MINUTES 51 SECONDS WEST A DISTANCE OF 30.00 FEET TO A CONCRETE MONUMENT; THENCE RUN NORTH 72 DEGREES 47 MINUTES 36 SECONDS WEST A DISTANCE OF 100.13 FEET TO A CONCRETE MONUMENT; THENCE RUN NORTH 77 DEGREES 41 MINUTES 36 SECONDS WEST A DISTANCE OF 99.97 FEET TO A CONCRETE MONUMENT; THENCE RUN NORTH 78 DEGREES 00 MINUTES 16 SECONDS WEST A DISTANCE OF 114.55 FEET; THENCE RUN SOUTH 11 DEGREES 59 MINUTES 44 SECONDS WEST A DISTANCE OF 143.50 FEET TO A POINT ON THE NORTHERLY RIGHT-OF-WAY LINE OF MICHAUX ROAD, SAID POINT BEING ON A CURVE CONCAVE TO THE NORTH AND HAVING A RADIUS OF 2884.36 FEET; THENCE RUN NORTHWESTERLY ALONG THE AFORESAID CURVED RIGHT-OF-WAY AN ARC DISTANCE OF 143.45 FEET (CHORD = 143.43 FEET, CHORD BEARING = NORTH 84 DEGREES 09 MINUTES 06 SECONDS WEST); THENCE DEPARTING THE AFORESAID NORTHERLY RIGHT-OF-WAY LINE RUN NORTH 00 DEGREES 34 MINUTES 00 SECONDS WEST A DISTANCE OF 239.85 FEET; THENCE RUN SOUTH 88 DEGREES 26 MINUTES 00 SECONDS WEST A DISTANCE OF 25.01 FEET; THENCE RUN NORTH 00 DEGREES 34 MINUTES 00 SECONDS WEST A DISTANCE OF 179.98 FEET TO THE POINT OF BEGINNING.

THE ABOVE DESCRIBED PARCEL OF LAND IS SITUATED IN A PORTION OF SECTION 6, TOWNSHIP 1 SOUTH, RANGE 7 WEST, LIBERTY COUNTY, FLORIDA AND CONTAINS 6.45 ACRES.

have caused said lands to be divided and subdivided as shown hereon and does hereby dedicate to the perpetual use of the City of Bristol, Florida, all streets, roads, alleys, and other rights-of-way, and all parks, recreation areas, and all easements for utilities, drainage and other purposes, and for all purposes incident thereto as shown and depicted hereon, reserving however the reversion or reversions should the same be renounced, disclaimed, abandoned, or the use thereof be discontinued as prescribed by law by appropriate official action of the proper officials having charge or jurisdiction thereof this 5th day of February, A.D., 1990.

Carolyn Shuler Larkin, [Signature]
Frederick Myers Shuler, [Signature]

Witness: [Signatures]

GENERAL NOTES:

1. THE BOUNDARY SURVEY AS SHOWN HEREON IS BASED ON EXISTING FIELD MONUMENTATION.
2. THE BEARINGS AND NORTH ARROW AS SHOWN ARE BASED ON THE PLAT OF SHULER HEIGHTS, UNIT NO. 1, PLAT BOOK "A", PAGE 16, LIBERTY COUNTY, FLORIDA.
3. THERE MAY BE ADDITIONAL RESTRICTIONS NOT RECORDED ON THIS PLAT THAT MAY BE FOUND IN THE PUBLIC RECORDS OF LIBERTY COUNTY, FLORIDA.



2852 REMINGTON GREEN CIRCLE
SUITE 102
TALLAHASSEE, FL 32308
904/385-6788