

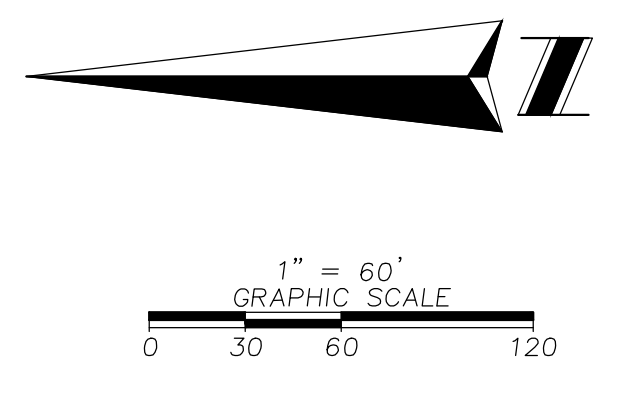
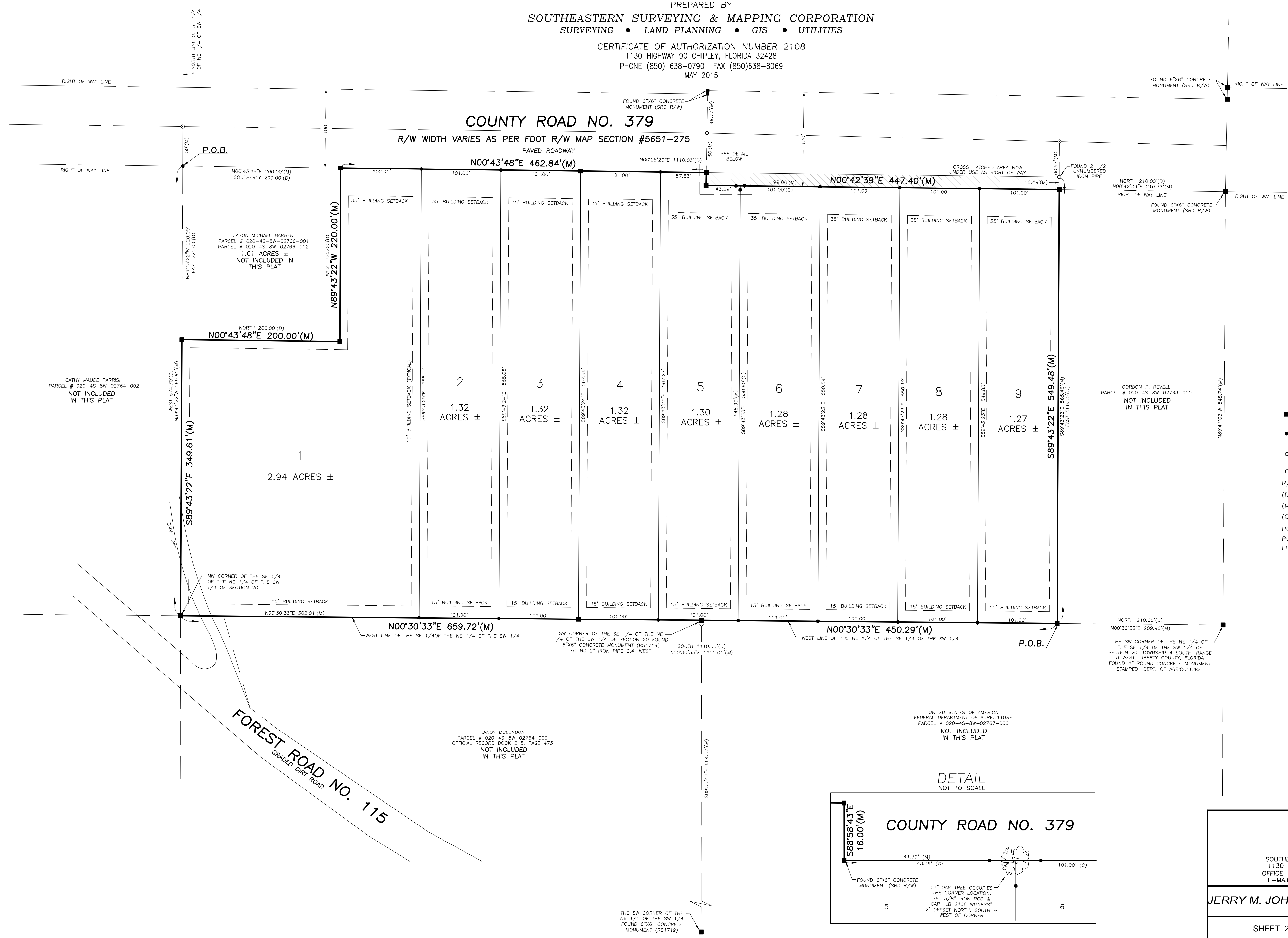
JERRY M. JOHNSON CAMPSITES SUBDIVISION

A MINOR SUBDIVISION SITUATED IN
SECTION 20, TOWNSHIP 4 SOUTH, RANGE 8 WEST,
LIBERTY COUNTY, FLORIDA

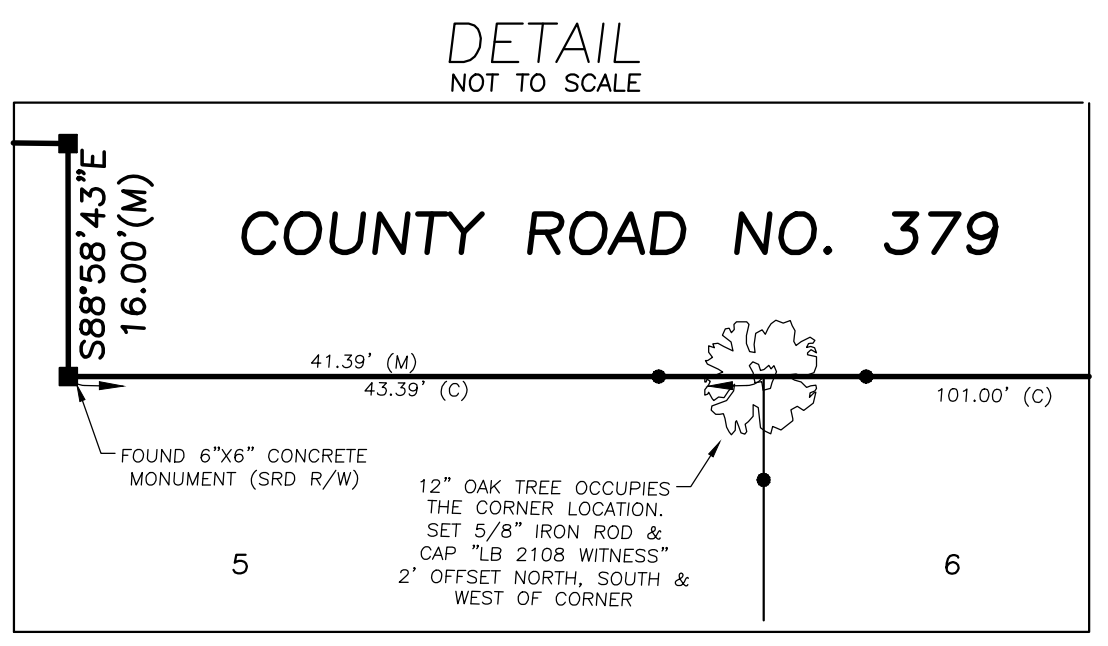
SHEET 1 OF 2 SHEETS

PREPARED BY
SOUTHEASTERN SURVEYING & MAPPING CORPORATION
SURVEYING • LAND PLANNING • GIS • UTILITIES

CERTIFICATE OF AUTHORIZATION NUMBER 2108
1130 HIGHWAY 90 CHIPLEY, FLORIDA 32428
PHONE (850) 638-0790 FAX (850) 638-8069
MAY 2015



- LEGEND & ABBREVIATIONS**
- = SET A 4" X 4" CONCRETE MONUMENT LB 2108 UNLESS NOTED OTHERWISE
 - = SET A 5/8" IRON ROD & CAP LB 2108 UNLESS NOTED OTHERWISE
 - = SET A NAIL & DISK LB 2108 UNLESS OTHERWISE NOTED
 - = FOUND IRON PIPE
 - R/W = RIGHT-OF-WAY
 - (D) = RECORD OR DEED DIMENSION
 - (M) = FIELD MEASURED DIMENSION
 - (C) = CALCULATED DIMENSION ONLY
 - POB = POINT OF BEGINNING
 - POC = POINT OF COMMENCEMENT
 - FDOT = FLORIDA DEPARTMENT OF TRANSPORTATION



Southeastern Surveying

SOUTHEASTERN SURVEYING & MAPPING CORP.
1130 HIGHWAY 90 CHIPLEY, FLORIDA 32428
OFFICE (850) 638-0790 ~ FAX (850) 638-8069
E-MAIL: INFO@SOUTHEASTERSURVEYING.COM

JERRY M. JOHNSON CAMPSITES SUBDIVISION

SHEET 2 OF 2 SHEETS 54558002