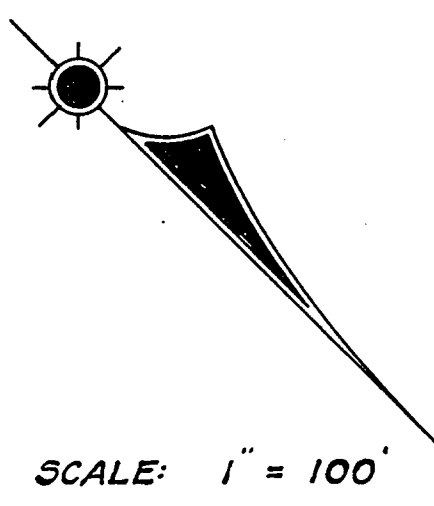
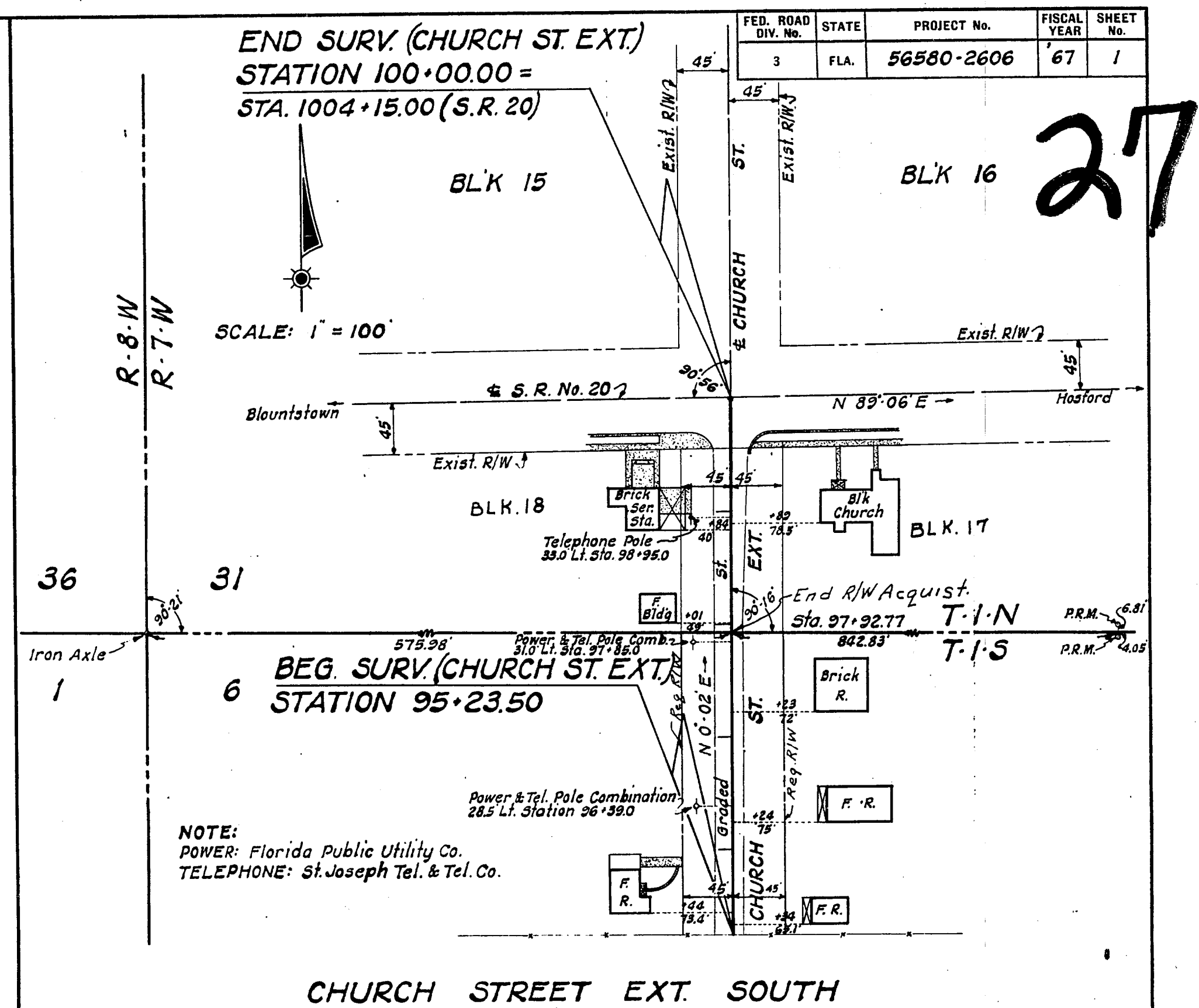


12



END SURV. (CHURCH ST. EXT.)
STATION 100+00.00 =
STA. 1004+15.00 (S.R. 20)

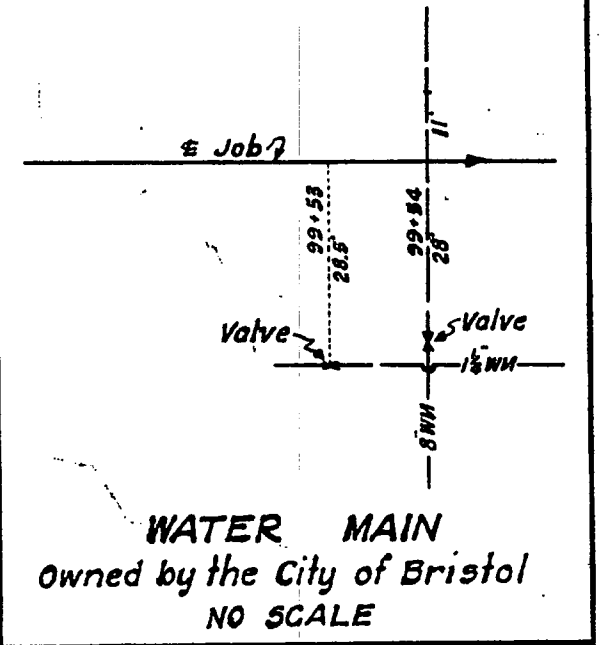
FED. ROAD DIV. No.	STATE	PROJECT No.	FISCAL YEAR	SHEET No.
3	FLA.	56580-2606	67	1



NOTE:
POWER: Florida Public Utility Co.
TELEPHONE: St. Joseph Tel. & Tel. Co.

CHURCH STREET EXT. SOUTH

CHURCH ST. EXT. SOUTH



WATER MAIN
Owned by the City of Bristol
NO SCALE

KEY (JOB)
00.00 =
R. S. 379

STATE ROAD 5-379
 PI. Sta. 31+77.28
 Δ 5'-30' Rt.
 D 1'-00'
 T 275.20'
 L 550.00'
 R 5729.65'
 PC. Sta. 29+02.08
 PT. Sta. 34+52.08

END SURVEY (JOB)
STATION 33+85.46 =
STA. 23+25.10 (S.R. 5-379)

(JOB)
 PI. Sta. 21+89.65
 Δ 43'-14' Lt.
 D 25'-19' 31"
 T 89.65'
 L 170.71'
 R 226.24' (Arc)
 PC. Sta. 21+00.00
 PT. Sta. 22+70.71

(JOB)
 PI. Sta. 26+92.46
 Δ 88'-53' Lt.
 T 54.61'
 L 86.38'
 R 55.68' (Arc)
 PC. Sta. 26+37.85
 PT. Sta. 27+24.23

END SURVEY (LEG)
STATION 128+48.88 =
STA. 16+94.97 (S.R. 5-379)

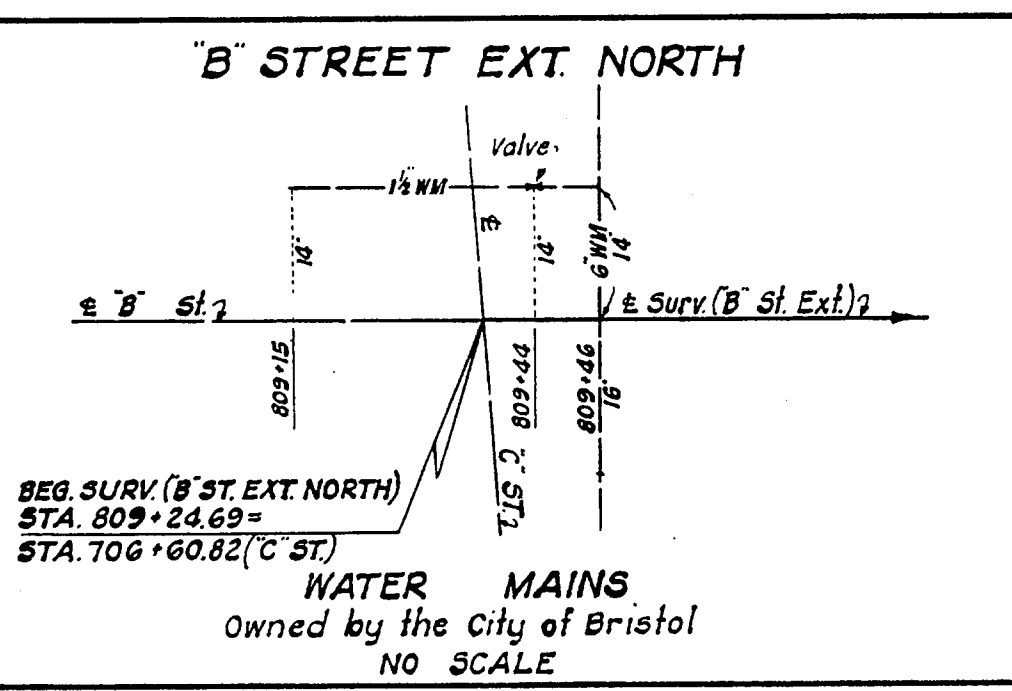
BEGIN SURVEY (LEG)
STATION 120+00.00 =
STA. 31+90.94 (JOB)

STATE ROAD 5-379
 PI. Sta. 18+23.84
 Δ 44'-46' Lt.
 D 8'-00'
 T 295.19'
 L 559.58'
 R 716.78'
 PC. Sta. 15+28.65
 PT. Sta. 20+88.23

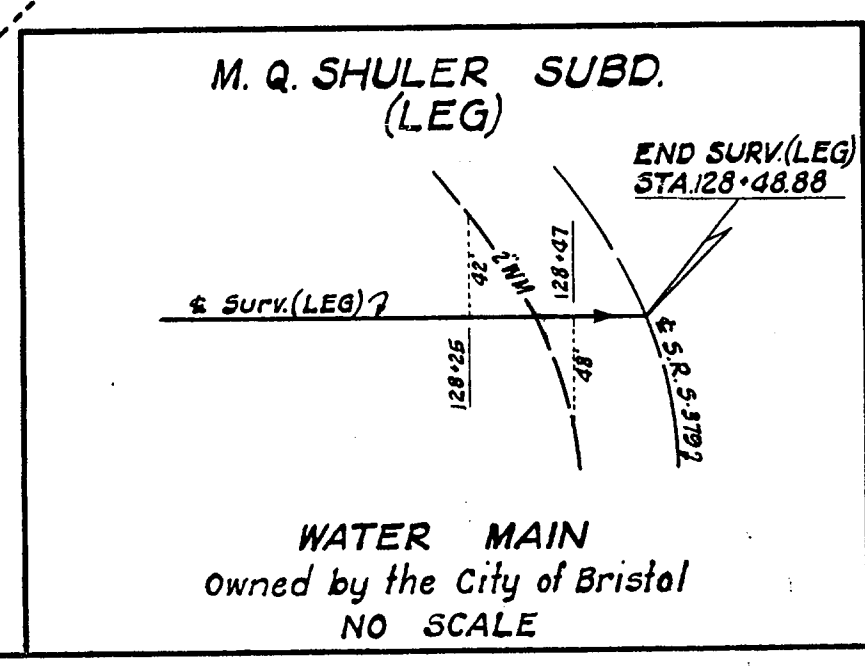
MAY Q. SHULER SUBDIVISION
(UNRECORDED)

B R I S T O L

BEG. SURV. (B ST. EXT.)
STATION 809+24.69 =
STA. 706+60.82 (C ST.)



WATER MAINS
Owned by the City of Bristol
NO SCALE



WATER MAIN
Owned by the City of Bristol
NO SCALE

NOTE:
For Location of Utility Poles, See Alignments.

STATE OF FLORIDA STATE ROAD DEPARTMENT			
RIGHT OF WAY MAP			
STATE ROAD NO. LIBERTY		COUNTY	
BY	DATE	APPROVED BY	DATE
DRAWN		<i>S. P. Deard</i>	
TRACED	W.R.	11-7-66	DISTRICT ENGINEER
CHECKED			
COMPARED			ENGINEER OF RIGHTS OF WAY
INDEXED			STATE HIGHWAY ENGINEER
SECTION. 56580-2606		SHEET 1 OF 1	

STREETS IN BRISTOL / STREETS IN M. Q. SHULER SUBD. / CHURCH STREET EXT. SOUTH / B STREET EXTENSION NORTH