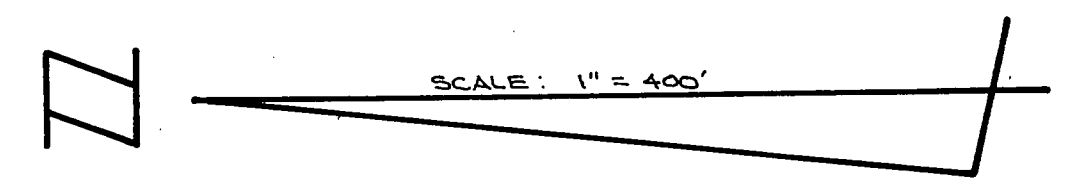
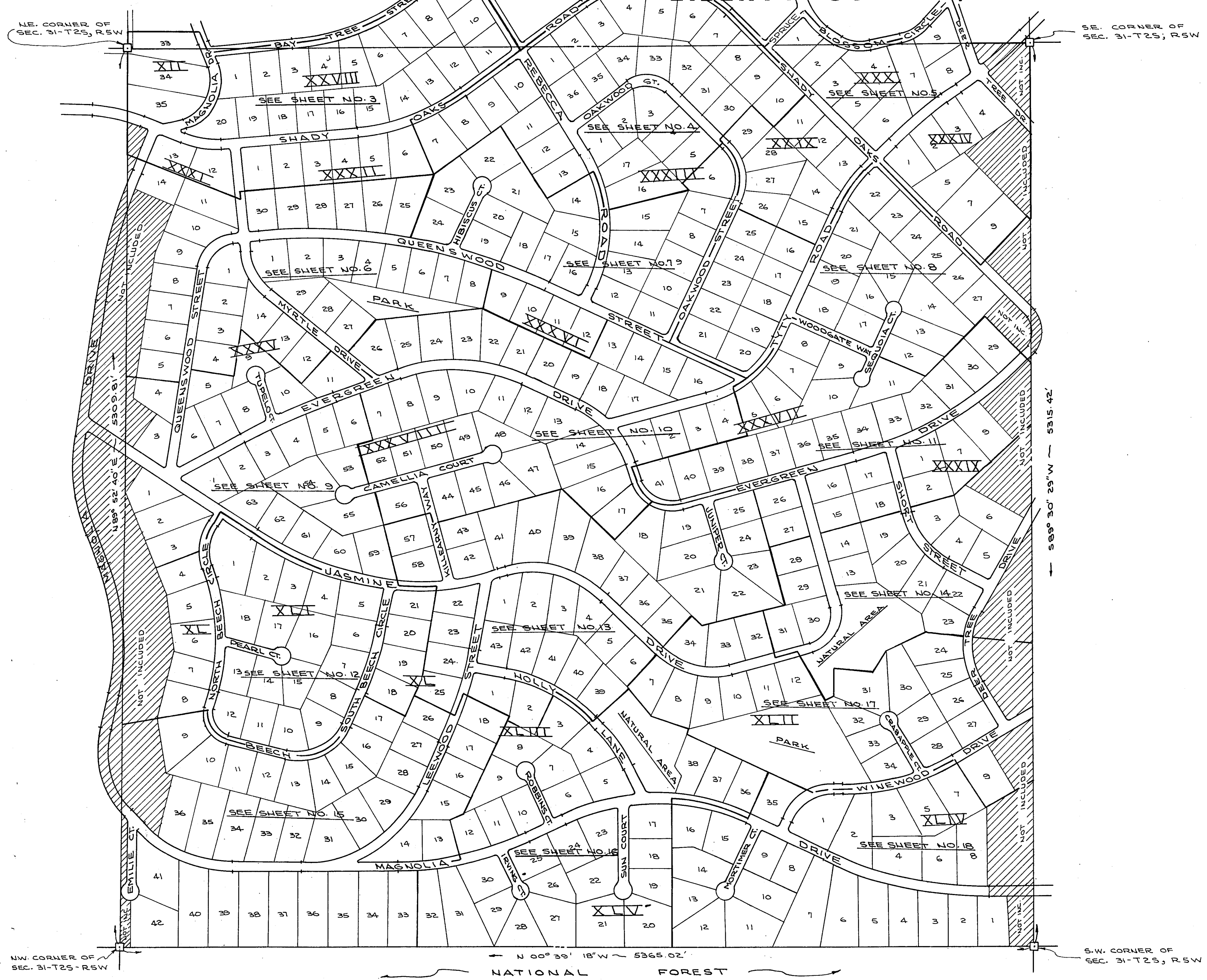


LIBERTY HILLS ESTATES - UNIT I-B

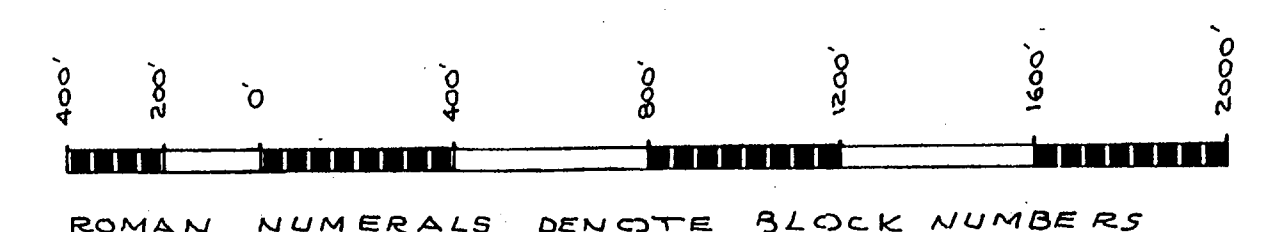
LIBERTY COUNTY, FLORIDA



NOTE: ANY DIFFERENCES BETWEEN THIS SHEET AND THE FOLLOWING DETAIL SHEETS - THE DETAIL SHEETS WILL GOVERN. THIS SHEET TO BE USED AS AN INDEX ONLY.

prepared for
FLORIDA GENERAL EQUITIES, INC.
 Miami ——— Florida

by
Apalachee Engineers & Land Surveyors, Inc.
 P. O. BOX 3163
 TALLAHASSEE, FLORIDA 32303



□ ~ denotes p.r.m. sheet 2 of 19