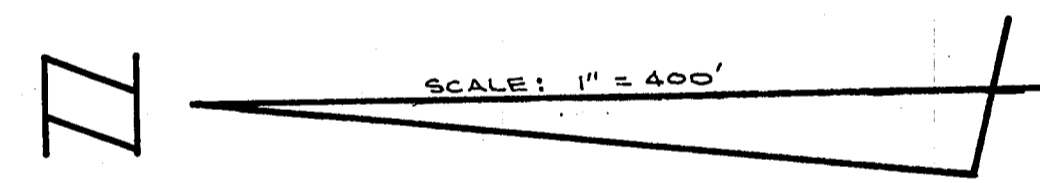
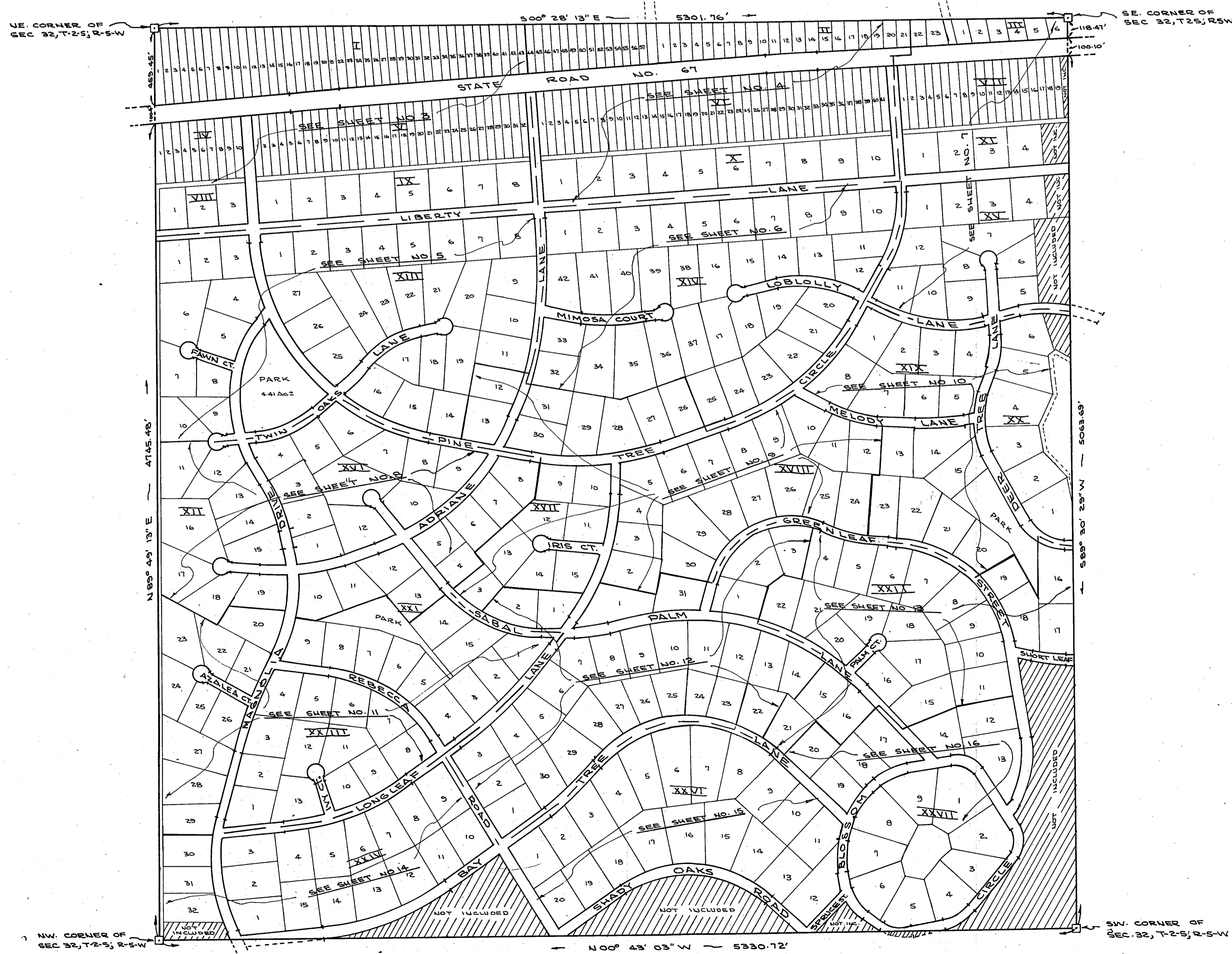


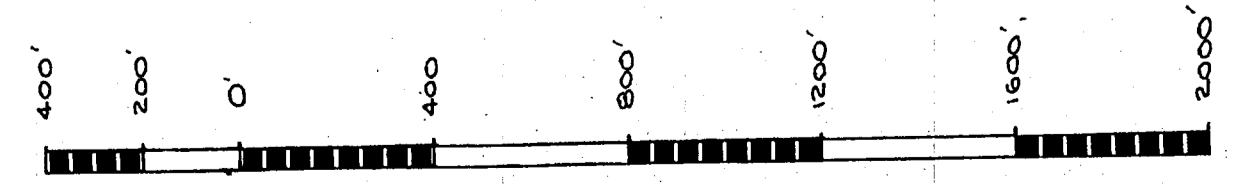
LIBERTY HILLS ESTATES - UNIT I-A

LIBERTY COUNTY, FLORIDA



prepared for
FLORIDA GENERAL EQUITIES, INC.
 Miami — Florida

by
Apalachee Engineers & Land Surveyors, Inc.
 P. O. BOX 3163
 TALLAHASSEE, FLORIDA 32303



ROMAN NUMERALS DENOTE BLOCK NUMBERS

□ ~ denotes p.r.m. **sheet 2 of 17**